

Installation Note

Agilent 89601A Software with Infinium Oscilloscopes



Agilent Technologies

Part Number 89600-90021
Printed in USA March 2002

Notice.

The information contained in this document is subject to change without notice.

Agilent Technologies makes no warranty of any kind with regard to this material, including but not limited to, the implied warranties of merchantability and fitness for a particular purpose. Agilent Technologies shall not be liable for errors contained herein or for incidental or consequential damages in connection with the furnishing, performance, or use of this material.

Installing Agilent 89601A Software with Infiniium Oscilloscopes

This sheet includes instructions for installing 89601A software and configuring a GPIB or LAN interface to the oscilloscope. You must configure either GPIB or LAN, not both. For information on computer system requirements, refer to the Performance Guide included with this package.

Install 89600 VSA Software

Insert the Agilent 89600 Vector Signal Analyzers Installation CD-ROM and follow the instructions in the installation wizard.

1. When the Installation Manager window opens, click **Install Agilent 89600 VSA**.
2. In the Installation Options window, select **Full Installation with LAN & GPIB** from the pull-down list.
3. After the software is installed, exit the Installation Manager window.

Configure GPIB interface

These instructions assume that your computer has a GPIB card installed and operable.

1. Connect your oscilloscope to the GPIB interface in the computer. Turn on the PC and the oscilloscope.

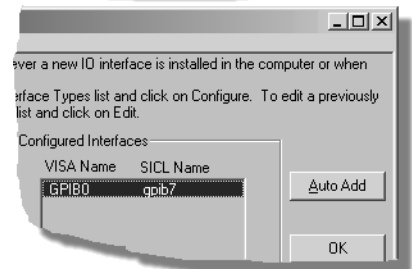
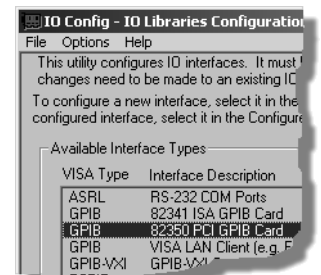
2. Configure IO.

- a. Click the **IO** icon in the task bar and **Run IO Config**, or click **Start, Programs, Agilent IO Libraries, IO Config**.
- b. Look at the list in the Available Interface Types column. Click the entry the corresponds to your GPIB interface (“82350 PCI GPIB” in this example), then click **Configure**.

(For the NI PCMCIA GPIB interface in a laptop, the interface is “SICL on NI GPIB.”)

- c. Accept all the defaults, click **OK**.
 - d. Click **OK**.
3. Run VISA Assistant to confirm that the instrument shows up in the list of instruments.
 - a. Click the IO icon, then click **Run VISA Assistant**. (Or **Start, Programs, Agilent IO Libraries, VISA Assistant**.) The instrument should be listed in the left side of the VISA Assistant window as something like <VISA Interface Name>::18::INSTR. (The VISA Interface Name will be something like GPIB0.) If the instrument is listed, continue with step d. Otherwise, continue with the next step.
 - b. If the instrument does not appear in the list, verify that cables are connected and power is turned on. Run VISA Assistant again. If the instrument appears in the list, continue with step d. Otherwise, continue with the next step.
 - c. If the instrument still does not appear in the list, run IO Config again and remove the interfaces you added. Then repeat step 2, and run VISA Assistant again.
 - d. Close VISA Assistant.

Continue with “Run the 89600 Analyzer.”



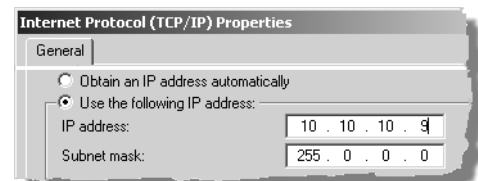
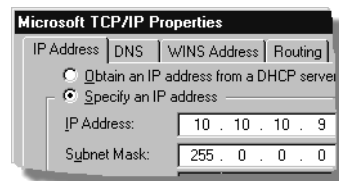
Configure LAN interface

You must ensure that the IP addresses for your computer and scope are compatible, then configure the LAN interface. The IP address consists of 4 groups of numbers separated by periods (for example 192.192.192.25).

1. If your computer is connected to a local area network (LAN), have your network administrator assign an IP address and Gateway address for the scope that will work with your computer.
2. Set the scope IP address.
 - a. With a mouse connected to the scope before power-up, click the mouse icon, then click **File, Network, Properties, Configuration**.
 - b. Scroll down to the TCP/IP icon that shows your scope's Ethernet card. Select it and click **Properties**.
 - c. Select the **IP Address** tab and select **Specify an IP address**.
 - d. Enter the IP and Gateway address assigned by the administrator.
 - e. Click **OK, OK**.
3. Determine the scope's Remote SICL Address Name.
 - a. With scope's keyboard connected, press CTRL+ESC. Use the scope's mouse to navigate to the IO Library.
 - b. Select **Start, Programs, Agilent IO Libraries, IO config**.
 - c. Select **VISA LAN Client and Configure**.
 - d. Note the VISA GPIB interface's SICL Address Name. For example, VISA Name **GPIB0** may have SICL Address Name **hpib7** or **gpib7**. This name will be used in step 11.
If a keyboard is not available, try both hpib7 and gpib7 for the Remote SICL Address Name in step 11.
 - e. Skip step 4 and continue with step 5.
4. If your computer is not on a Local Area Network and you will be connecting directly to the scope using a crossover cable, perform these steps:
 - a. Determine the IP address for your computer. Click **Start, Run**. Type cmd and click **OK**. At the DOS prompt, type ipconfig and press **Enter**. If a nonzero IP address is listed, leave it and continue with step b. If the address is 0.0.0.0, go to step d.
 - b. Set the IP address on the scope so that the first 3 sections of the IP address are the same as for the computer, and the last section is 1 greater than that for the computer. (For example, if the computer IP address is 192.192.192.25, set the scope IP address to 192.192.192.26.) To change the scope IP address, press **System, Config IO, IP address**, type the new address using the number keypad, and press **Enter**.
 - c. Continue with step 5.
 - d. Find the IP address for the scope by following step 2 above. Set the IP address for the computer so that the first 3 sections are the same as for the scope, and the last section is 1 lower than for the scope. (For example, if the scope IP address is 10.10.10.10, set the computer address to 10.10.10.9.)

For Windows NT, right click **Network Neighborhood**, click **Properties, Protocols, TCP/IP Protocol, Properties, Specify an IP address**.

For Windows 2000, right click **My Network Places**, click **Properties**, right click **Local Area Network**, click **Properties, Internet Protocol (TCP/IP), Properties, Use the following IP address**.



Type the address in the box, using periods (.) to separate the sections.

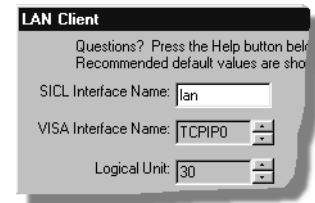
- e. Click in the Subnet Mask box. Accept the default numbers that appear. Click **OK** and close all dialog boxes.
- f. If you are prompted to reboot your computer, do so now.

5. If the IP address begins with "10.", set the scope subnet mask to "255.0.0.0". If the IP address begins with anything other than "10.", set the scope subnet mask to "255.255.0.0". (Press **System**, **Config I/O**, **Subnet Mask**, type the new address using the number keypad, and press **Enter**.)
6. Be sure that both the scope and your computer are connected to the LAN, or connect a crossover cable between the computer and the scope.
7. Cycle power on the scope.
8. Run the Agilent I/O Libraries I/O Configuration tool. Click the **IO** icon in the task bar, then click **Run IO Config**. (Or click **Start, Programs, Agilent IO Libraries, IO Config**.)
9. Remove any previously installed interfaces.

<u>VISA name</u>	<u>SICL Name</u>
TCPIP0	lan
GPIB1	n/a

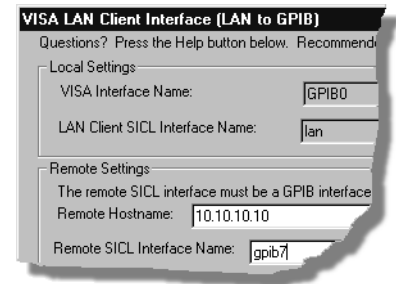
10. Setup the LAN Client.

- a. Click **LAN Client, Configure**.
- b. Leave the default selections in the LAN Client dialogue box.
- c. Remember the name in the Interface Name box.
- d. Click **OK**.



11. Setup the VISA LAN Client.

- a. Click **VISA LAN Client, Configure**.
- b. Enter the scope IP address in the Hostname box. (To find the IP address for the scope, press **System**, **Config I/O** on the scope front panel.)
- c. Change the Remote SICL Address to **gpib7** (this **must** be gpib7, not hpib7).
- d. Confirm that the entry in the SICL LAN Interface box matches the Interface Name that you noted in step 10.
- e. Remember the VISA Interface Name.
- f. Click **OK, OK**.



12. Run VISA Assistant to confirm that the scope shows up in the list of instruments.

- a. Click the IO icon, then click **Run VISA Assistant**. (Or **Start, Programs, Agilent IO Libraries, VISA Assistant**.) The scope should be listed in the left side of the VISA Assistant window as something like <VISA Interface Name>::18::INSTR. (The VISA Interface Name will be something like GPIB0.) If the scope is listed, continue with step d. Otherwise, continue with the next step.
- b. If the scope does not appear in the list, verify that cables are connected and power is turned on. Run VISA Assistant again. If the scope appears in the list, continue with step d. Otherwise, continue with the next step.
- c. If the scope still does not appear in the list, run IO Config again and remove the interfaces you added. Then repeat step 10 and step 11, and run VISA Assistant again.
- d. Close VISA Assistant.

Run the 89600 analyzer

1. Start the analyzer by double-clicking the VSA icon on your desktop or by clicking **Start, Programs, Agilent 89600 VSA, Vector Signal Analyzer**.
2. When a dialog box asks if you want to obtain authorization, click **Yes**.
3. On the Trial License tab, click **Accept Trial**.
4. Click OK in the message box, then click **Close** in the authorization box. The 89600 VSA software starts. You can use the demo software for 14 days. Note that only one 14-day trial period is available. You cannot request another trial license. If you want to continue using the 89601A software, you must purchase it.
5. Click **Utilities, Hardware**. If the Simulate hardware box is checked, click to uncheck it.
6. Under ADC1 tab select the address that corresponds to the Infiniium oscilloscope. Be sure that nothing is selected on the other tabs in the Select Hardware window.